

Feb 2020 | No.391

今日家居[®]

INNOVATION IN LIFE - STYLE

TODAY'S LIVING

Cover Story

南非臨海型居 15,000 呎

Cape Town Charisma

Designed by

**Stefan
Antoni**

Inspirational interiors
from 700-15,000 sq.ft.

Special Supplement

燈光盛宴

Glow in the Dark

Living Plus

情人節呈獻心思禮物

Be My Valentine



室內設計

HK \$35
9 771018 578003
A Bilingual Interiors Monthly



陽光泰式木屋

戶主於此單位已住上十年，喜好隨著年月不經不覺轉變，於是找來設計師 Dick chan，為單位改頭換臉，重新演繹戶主喜愛的休閒泰式風格。居室原本的泰式風格調子較為暗沉，用以深木色及黃光；今次設計師以淺木色營造現代泰式感覺，並大幅注入白色及灰色調和，教人不禁沉醉於安靜清閑的氛圍中。Featuring an understated black, white and grey black palette softened with the addition of vibrant flecks of gold, this Sai Kung home showcases the work of Bel Conchetto Interior Design.



Text by Nicole Chung & Melinda Earsdon
Interior design and photo courtesy of Dick Chan /
Bel Conchetto Interior Design Limited



1. 客廳設計素淨簡約，配合布藝梳化及單人椅，與木系茶几共同構成溫暖的一角。|| The lounge features a bright and airy style, designed to draw attention to the outdoor terrace that extends out of the apartment through the floor-to-ceiling bi-fold glass doors.

2. 梳化背後的掛畫能讓戶主因應心情而轉換，帶來多姿的效果。|| The lounge itself plays home to a minimalist grey L-shaped sofa, which has been decorated with accent cushions that complement the golden tones of the prints on the wall behind.

3. 設計師將音響及電視隱入由白色及木色組合而成的電視牆，線條工整俐落。|| Because the owners enjoy a large collection of audio visual equipment, the designer was quick to recommend a built-in TV wall that would hide everything in one place.



獨

立屋位於西貢白沙灣，風光明媚，本來已有極佳的採光優勢，因此設計師 Dick 特意加入淺木色傢俱，將窗外的陽光帶入屋內，營造舒適自然的感覺。

泰式自然

戶主希望新的設計能予他們煥然一新的感覺，而且希望充分享受充沛的陽光，讓居室更加光猛開揚。因此設計師以現代輕泰式設計風格為主調，改用淺木色、白色及灰色，增添溫暖氣氛之餘，又不失現代感。甫入室內，左側是以白色為主的開放式廚房，設計師 Dick 表示舊有的板材已過時，因此轉用啞白色板材，並以灰黑色雲石鋪砌吧檯，灰黑色雲石紋理粗獷鮮明，整體的灰白對比帶來強烈的視覺衝擊。一旁雲石紋理的灰色特色牆亦是設計師為戶主精心配置，牆身實際為一塊陶瓷板，設計師表示，考慮到獨立屋位於西貢，容易受潮濕影響，用雲石的話較難保養，於是改用薄身、且耐用易打理的陶瓷板，達致歷久常新的效果。飯廳設計素淨簡約，而且一切圍繞著已沿

用十年的木餐檯，設計師添置 Francfranc 的餐椅、Tequila Kola 木椅及鏡子，營造輕鬆休閒的氛圍。設計師在樓梯處的屏風也花了不少心思，同樣由貫穿居室的黑、白及木色組成，並加入幾何及鏤空元素，整體不覺累贅，與前方的 BoConcept 木櫃相映成趣。

時尚灰調

客廳設計素淨簡約，配合 Tequila Kola 及 TREE 的布藝梳化及單人椅，與 BoConcept 木系茶几共同構成溫暖的一角。客廳的焦點是偌大的白色電視櫃，由於戶主為音響迷，卻又希望音響能工整地藏身於櫃組內，於是設計師與音響顧問合作，在客廳電視櫃配置上喇叭及其他音響設備，營造出清雅的效果。

一樓的空間為戶主二人的睡房，以及各自的衣帽間。設計師指，主人房作為戶主二人休憩放鬆的地方，可大膽起用較深的色調，於是深木色地板配上深灰色布紋牆紙。床尾為灰玻璃電視牆，包圍以黑色不銹鋼邊框，時尚美觀。女戶主的衣帽間設有 L 形的灰色花線櫃組，其中角落的位置也改成了斜身，讓每一吋空間得以善用。



1. 樓梯處的屏風主要用作掩蓋樓梯底，屏風由貫穿居室的黑、白及木色組成，並加入幾何及鏤空設計。
|| Discretely hiding the area under the stairs, a black, grey and wood partition screen featuring geometric patterns has been incorporated, creating a talking point for dinner parties.

2. 設計大幅採用白色，間或加入淺木色、灰色及黑色，溫潤的木色為居室帶來淡淡自然之感。
|| Because the owners were keen on keeping the dining table, the designer brightened it up with the addition of a pair of black and brass chairs and a wood bench.

3. 廚房旁的牆身鋪有一塊灰色雲石紋陶瓷板，有防潮、防花的優點，且易於打理，適用於潮濕的海邊環境。
|| On one side of the room, the design team have added a marble-patterned feature wall made from ceramic plate, which can withstand Hong Kong's humid climate.



At almost 1,300 square feet, Ruby Chalet in Sai Kung was blessed with a generous footprint, however the property was last decorated more than ten years ago. As such, the owners felt it was time for a facelift, so they turned to Dick Chan and the talented team from Bel Concetto Interior Design Limited to help breathe new life into their home.

While the owners were happy with their original Thai style design, they wanted to create a lighter, more contemporary vibe, brightening up the property and enhancing the sense of spaciousness. In order to achieve this, the design team introduced an understated black, white and grey palette, which has been softened thanks to the addition of a rich selection of materials and vibrant flecks of gold throughout. The end result is a modern take on a much-loved theme.

Kickstarting the project, the designer began work by renovating the entrance hall, replacing the old outdoor wood decoration with grey tiles and ceramic plate, lightening up the feel. They also built a unique grey slate feature beside the door.

Moving into the main living and dining room, and the lounge features a bright and airy style, designed to draw attention to the outdoor terrace that extends out of the apartment through the floor-to-ceiling bi-fold glass doors. The lounge itself plays home to a Tequila Kola grey L-shaped sofa, which has been decorated with accent cushions in black, grey and yellow, complementing the golden tones of the three photographic prints on the wall behind.

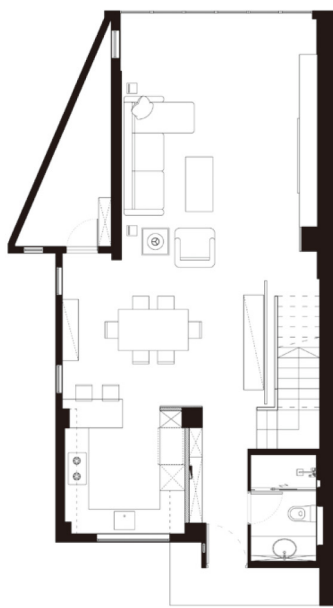


主人房採用較深的色調，深木色地板配上深灰色布紋牆紙，營造幽幽格調。|| In the master bedroom, the designer settled on a darker shade of grey than elsewhere in the apartment, continuing the theme while introducing a more distinguished ambience.

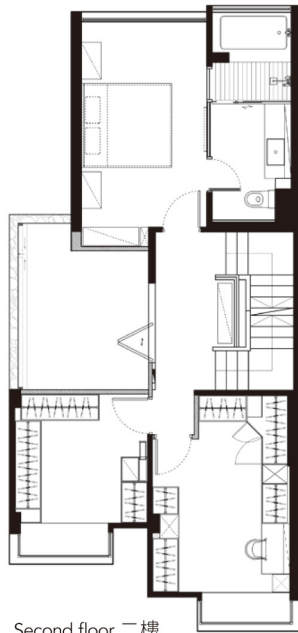


1. 床尾為一道灰玻璃電視牆，包圍以黑色不銹鋼邊框，時尚美觀。|| Leading the way into the en suite, a pair of sliding grey glass and black steel doors has been added, exaggerating the sense of space within.
2. 女戶主的衣帽間設有灰色花線櫃組，亦設有梳妝檯方便女戶主妝點儀容。|| Both of the owners wanted their own walk-in closet space, so Chan was quick to add grey wardrobes for the lady of the house.
3. 一樓放置了精緻的淺木色櫃子，配合整室自然的主題。|| In the hallway, a simple pale wooden console table has been added next to the staircase, embraced by the clean lines of the glass balustrade.
4. 主人套房也以淺木色及灰色為主，並加入原本沒有的浴屏。|| With understated, modern fixtures and fittings, the en suite bathroom also features clean lines, including the stunning use of outdoor wood in the shower, leading straight to the bath.
5. 客廁以大地色調作為背景，鏡櫃橫跨牆身，美觀實用。|| The guest bathroom has been decorated with simple white fixtures, pale tiles underfoot and on the walls, and an expansive mirrored cabinet.

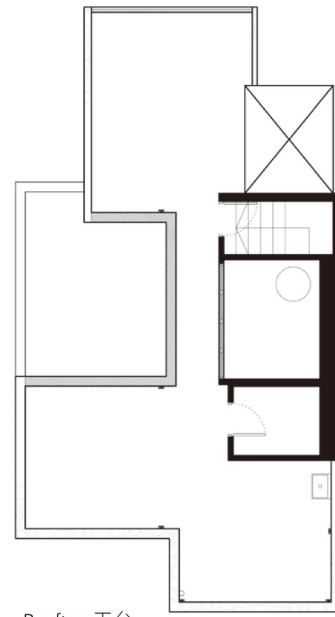




First floor 一樓



Second floor 二樓



Rooftop 天台

1. 獨立屋入口旁設有精心鋪砌的石板，為一室打開序幕。
 || At almost 1,300 square feet, Ruby Chalet in Sai Kung was blessed with a generous footprint, however the property was last decorated more than ten years ago.

2. 位於客廳旁的後花園以戶外木打造自然悠揚的氣息。|| The owners felt it was time for a facelift, so they turned to Dick Chan and the talented team from Bel Conchetto Interior Design to help breathe new life into their home.

Data

Location: Ruby Chalet, Sai Kung 西貢寶石小築

Size: 1,294 sq.ft

Supplier List

Living and dining room: (sofa, wood bench & mirror) Tequila Kola (coffee table & sideboard) BoConcept (dining chair) Francfranc (dining table & single seater) TREE (wallpaper) Goodrich Master bedroom: (wallpaper) Kinland Wallpaper



1.



2.